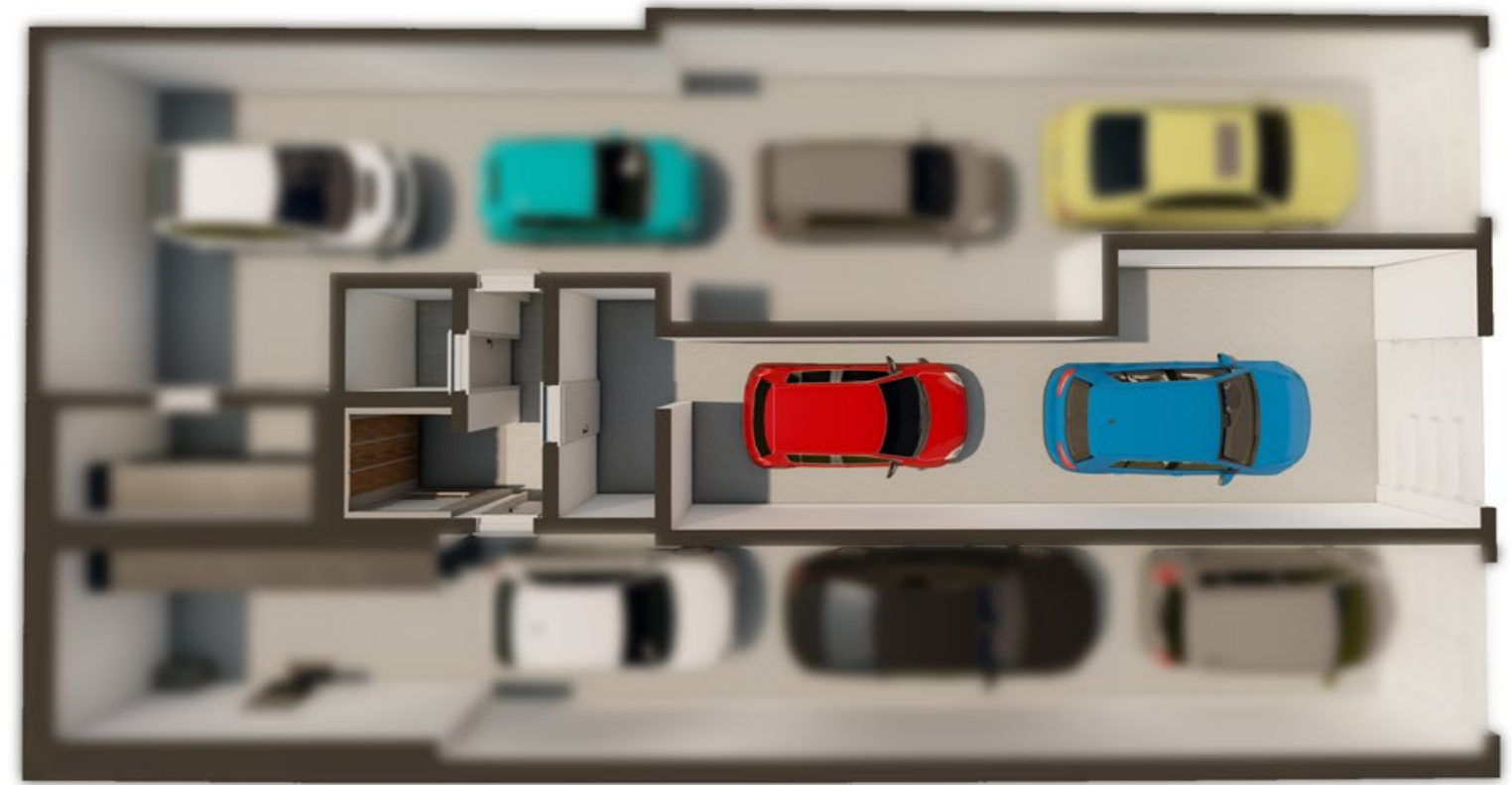
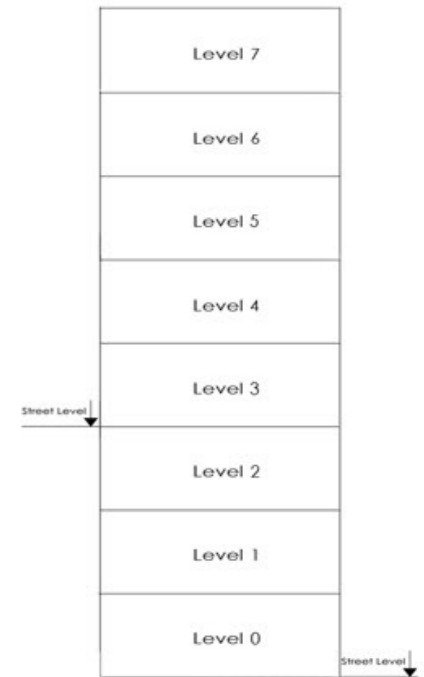


# Northern Heights

Mellieha



Triq tas-Salib



**GSL02**  
Ground Floor (Level 0)

Artistic Impression Only  
Beams may protrude with  
minimum headroom of 2.1m

Internal : 46 m<sup>2</sup> External : 0 m<sup>2</sup>  
Total Area : 46 m<sup>2</sup> circa